



MINISTRY OF FORESTRY AND NATURAL RESOURCES

DEPARTMENT OF CLIMATE CHANGE AND METEOROLOGICAL SERVICES



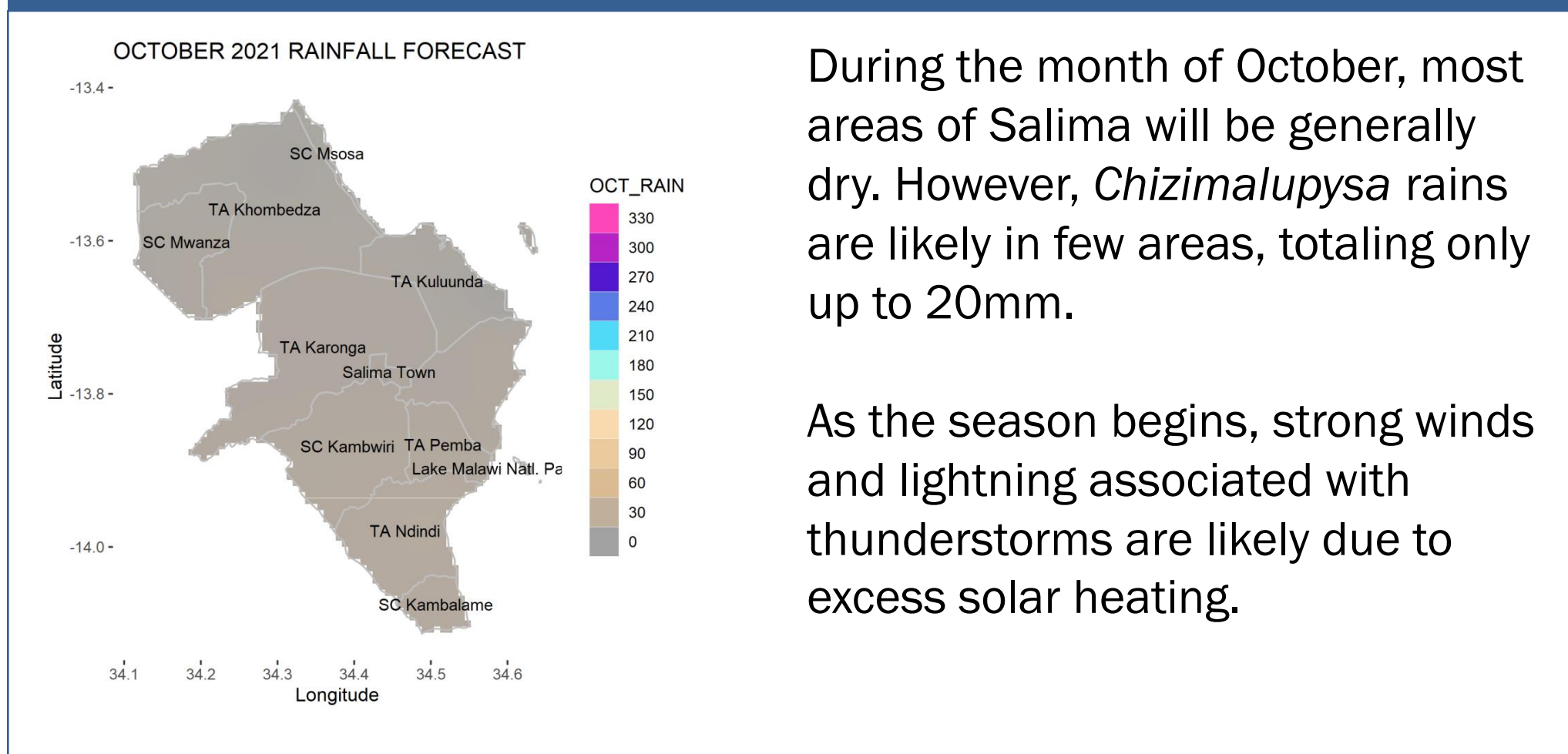
SALIMA DISTRICT DOWNSCALED SEASONAL FORECAST, 2021-2022

Overview of 2021/2022 Rainfall Season

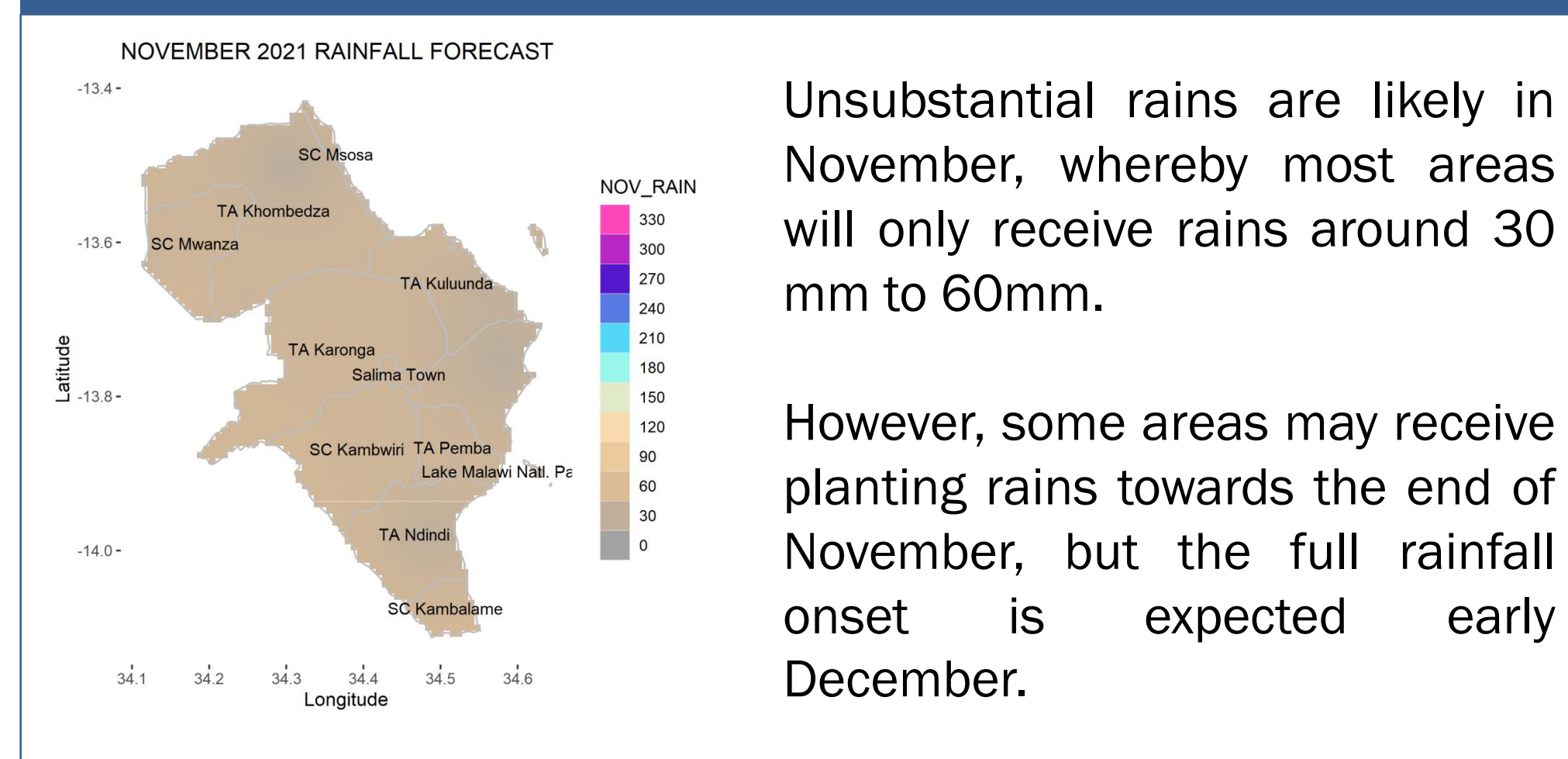
The 2021-2022 rainfall season is expected to be influenced by weak La Nina in Malawi. La Nina is the unusual cooling of ocean waters over eastern-central equatorial Pacific Ocean.

Salima district is expected to receive **normal to above normal rainfall amounts**, except during the month of December, when normal to below normal rainfall is likely over most areas of the district.

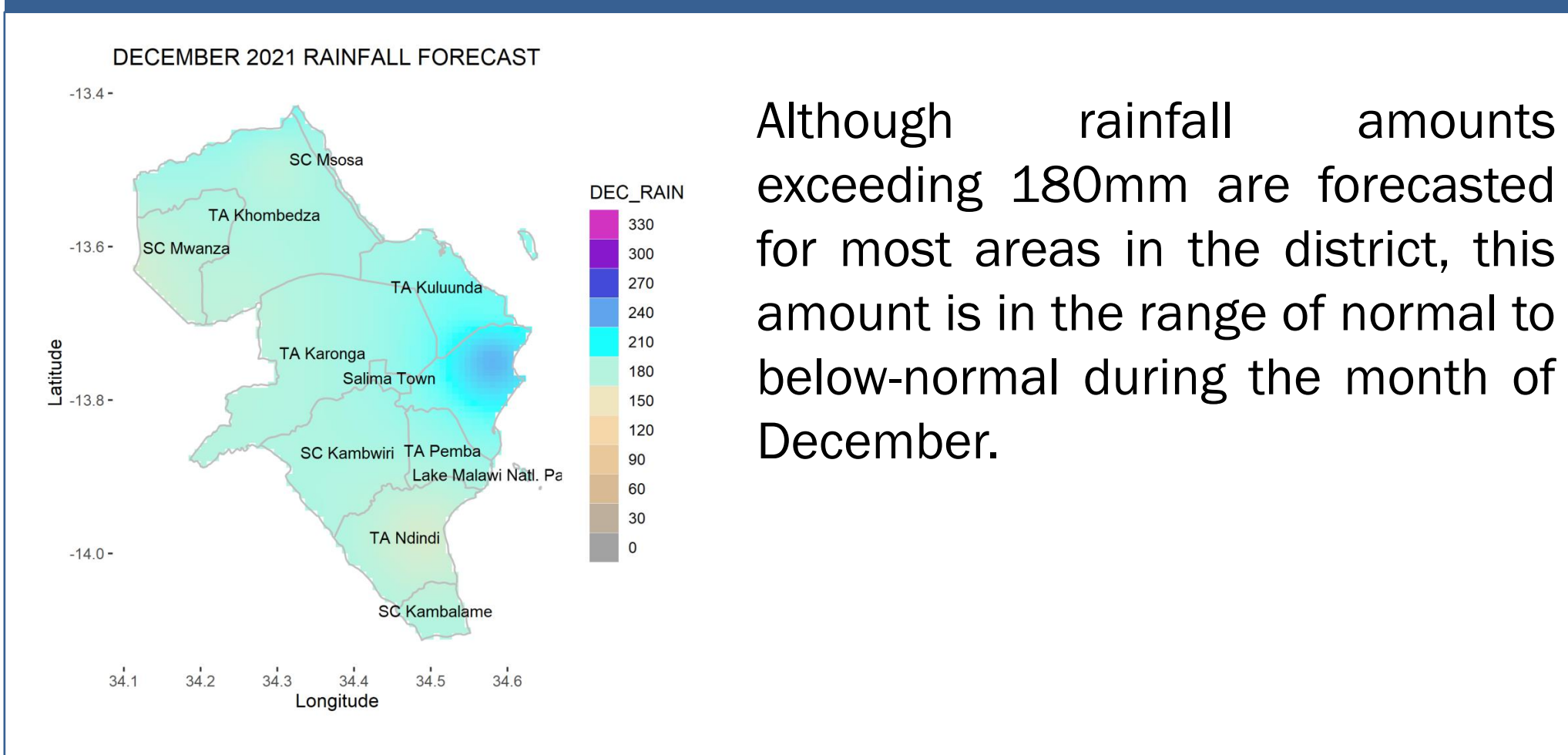
October 2021



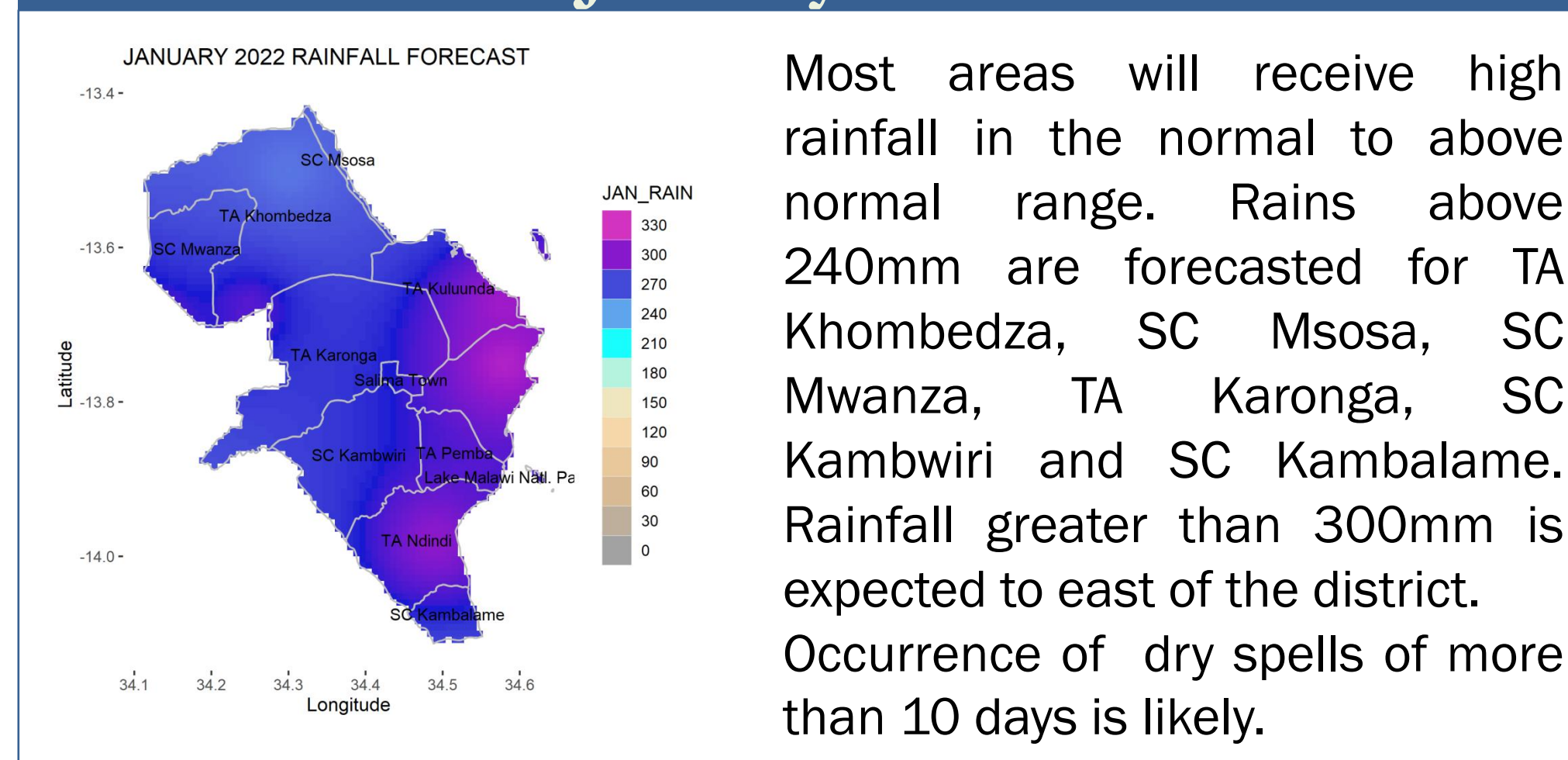
November 2021



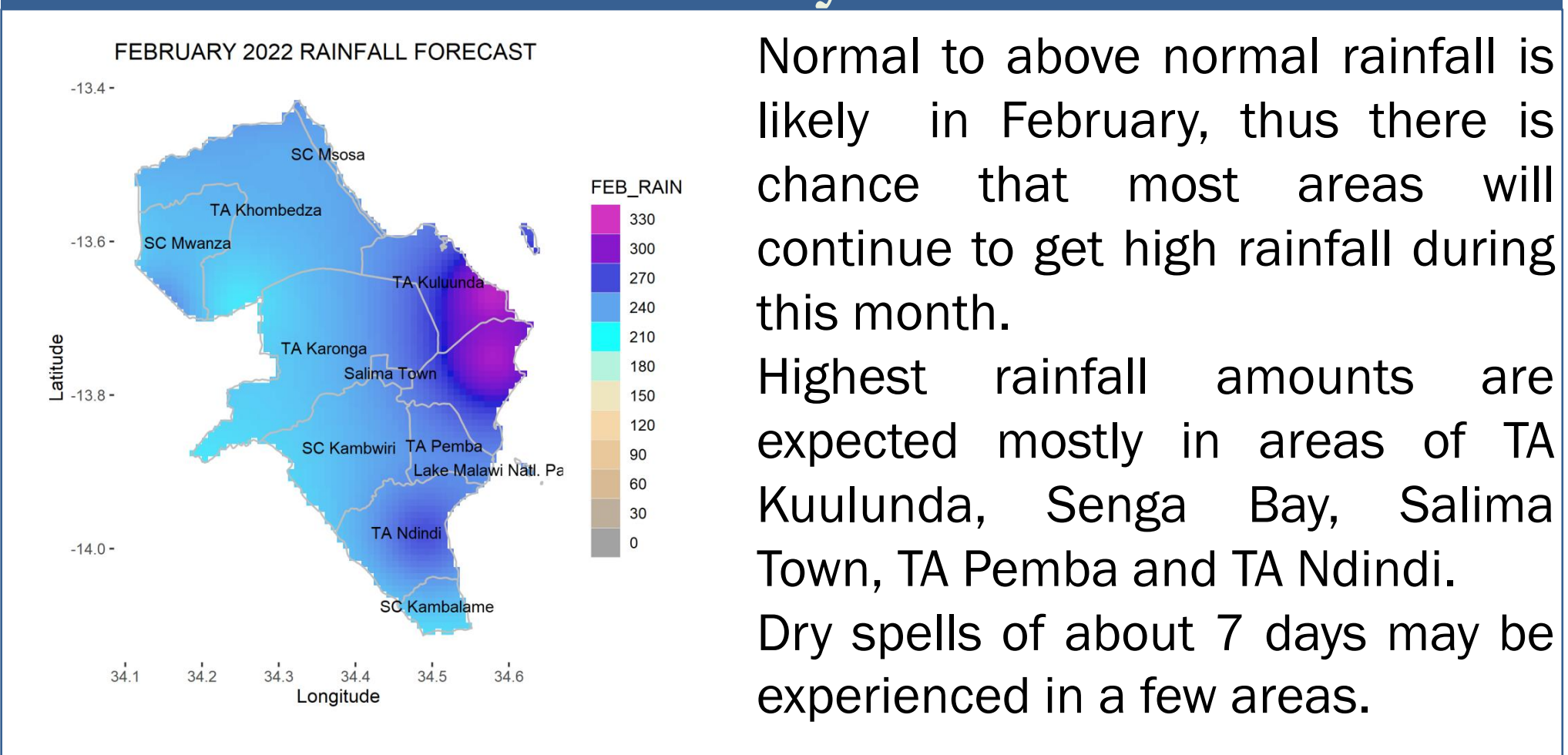
December 2021



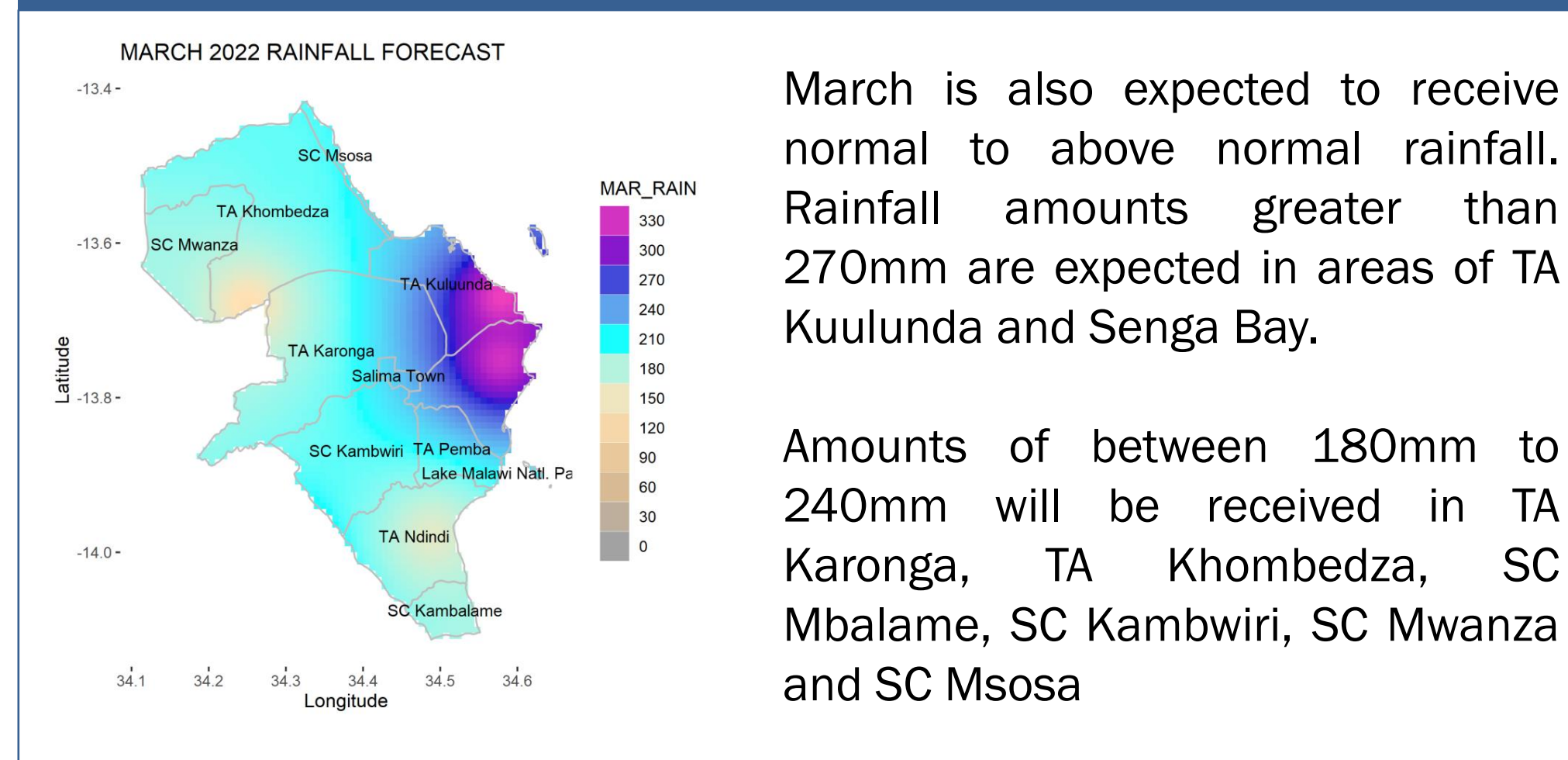
January 2022



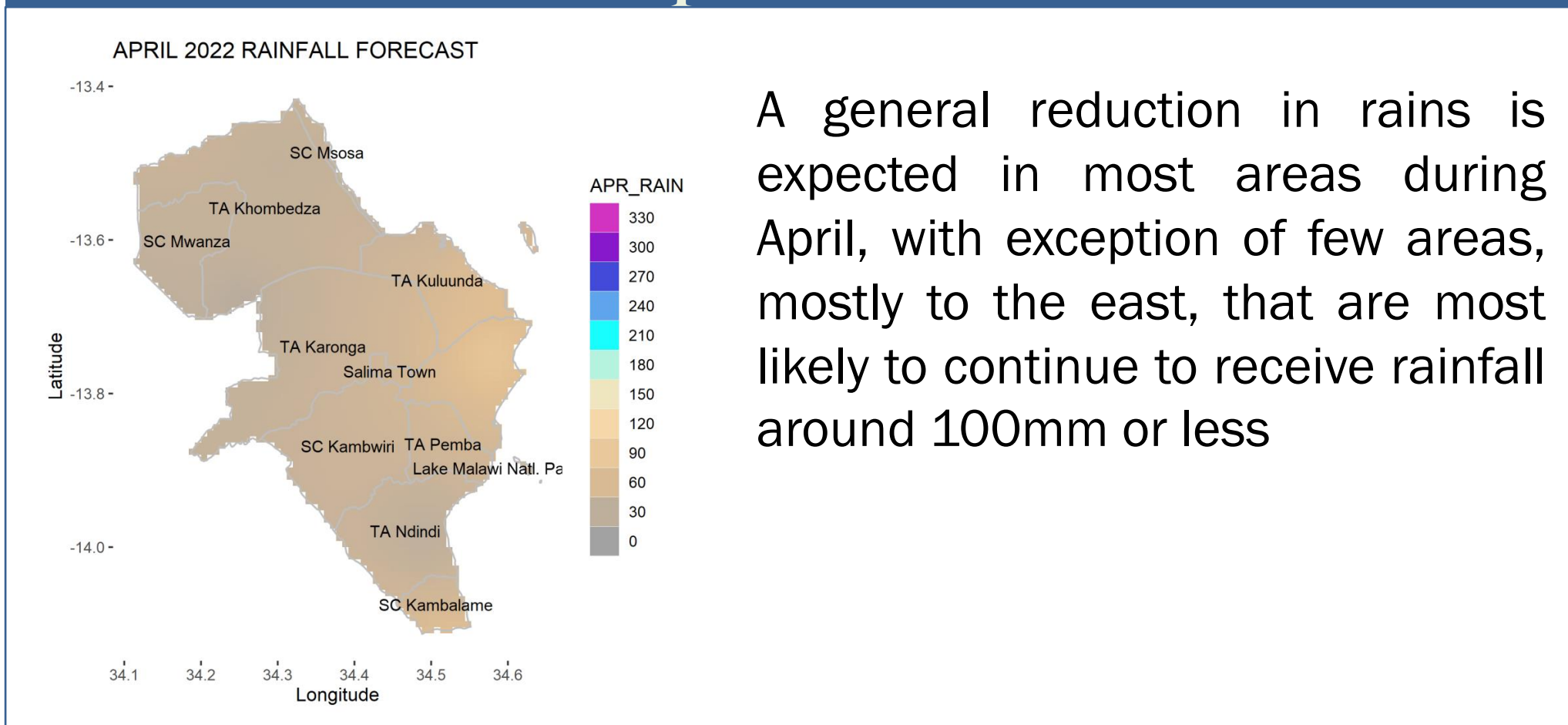
February 2022



March 2022



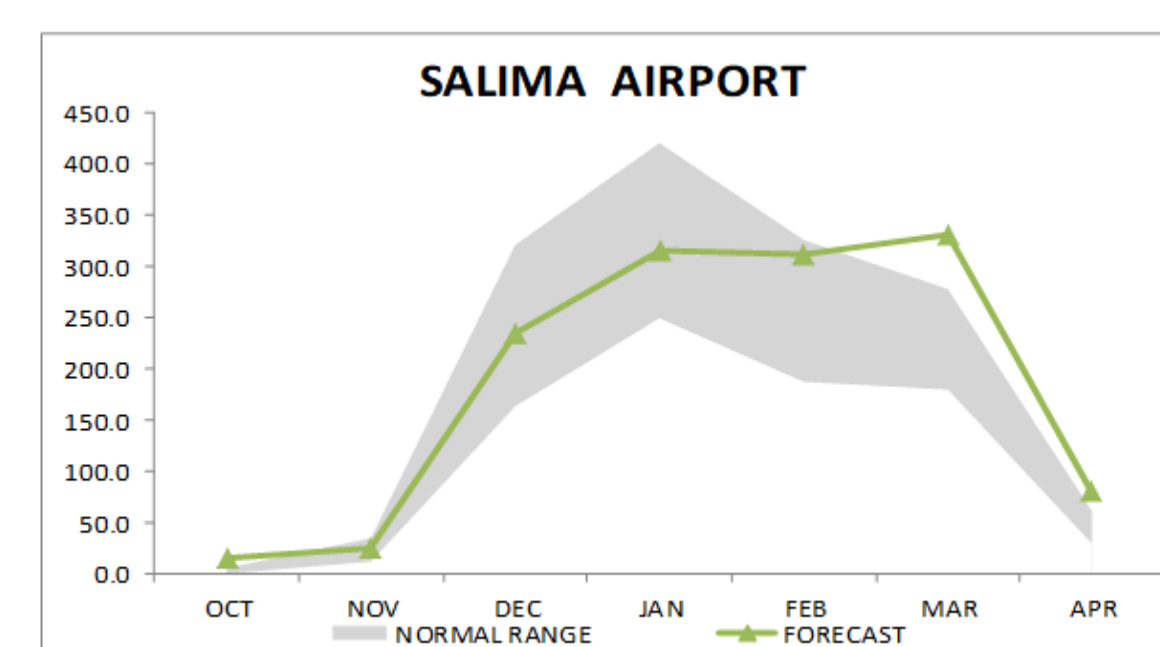
April 2022



The rainfall Onset is expected between last week of November to 2nd week of December 2021. Rainfall Cessation is expected last week of March to first week of April 2022. The seasonal length is expected to range from 110 to 124 days. Dry spells of more than 10 days are likely in January, but less in February.

The table and figure below show monthly rainfall distribution for the season with a normal band in grey.

SALIMA		
MONTH	NORMAL RANGE	FORECAST
OCT	0.1	5.4
NOV	11.7	34.5
DEC	163.1	320.2
JAN	249.0	419.6
FEB	187.0	325.2
MAR	179.5	277.3
APR	29.2	60.6



For further information contact:

The Director of Climate Change and Meteorological Services,
P.O. Box 1808, Blantyre.
Tel +265 1 82 47 12 / Cell: +265 999 91 13 14
Email: metdept@metmalawi.gov.mw ; Website: www.metmalawi.gov.mw

Produced and printed with support from:

